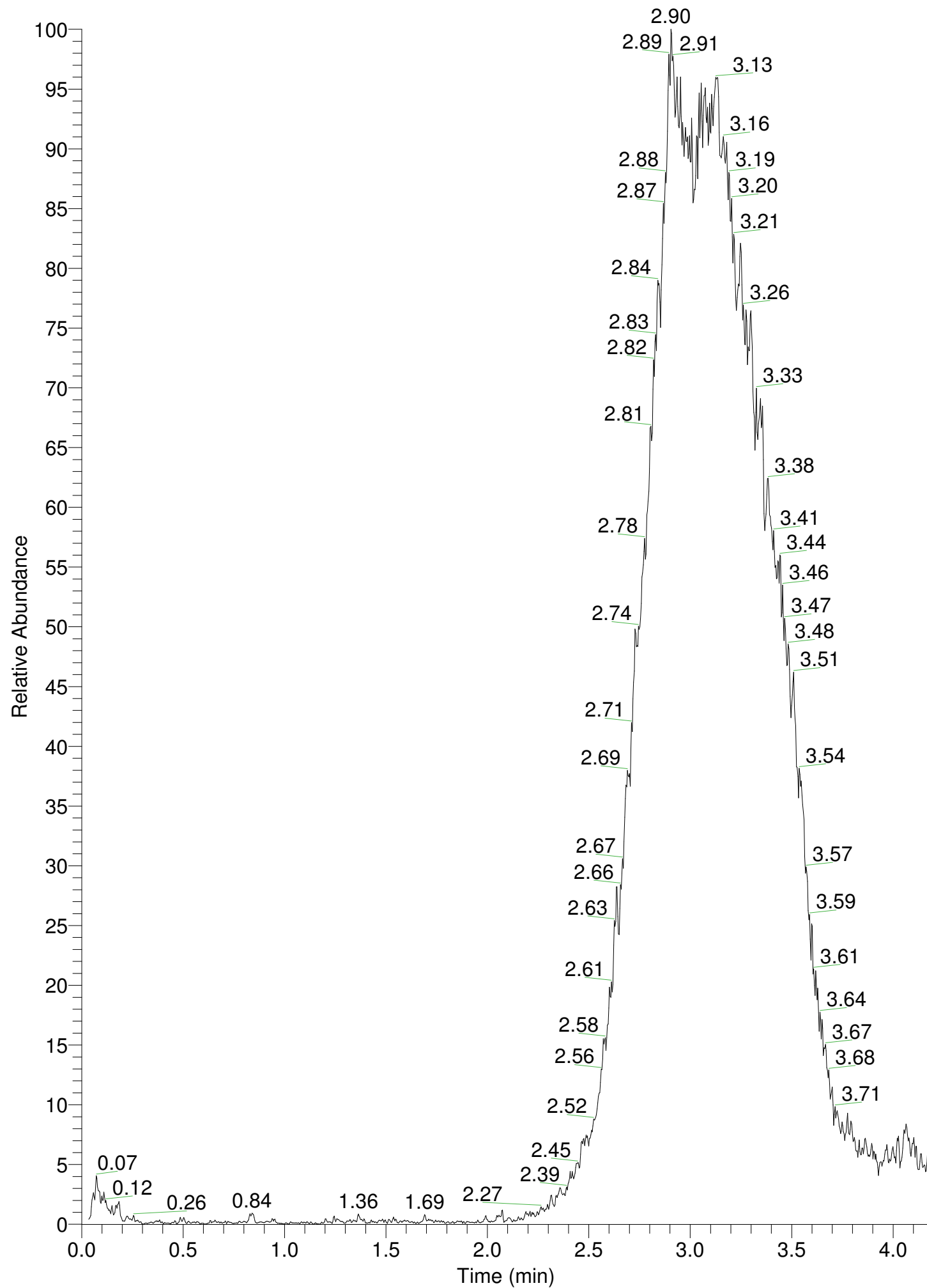


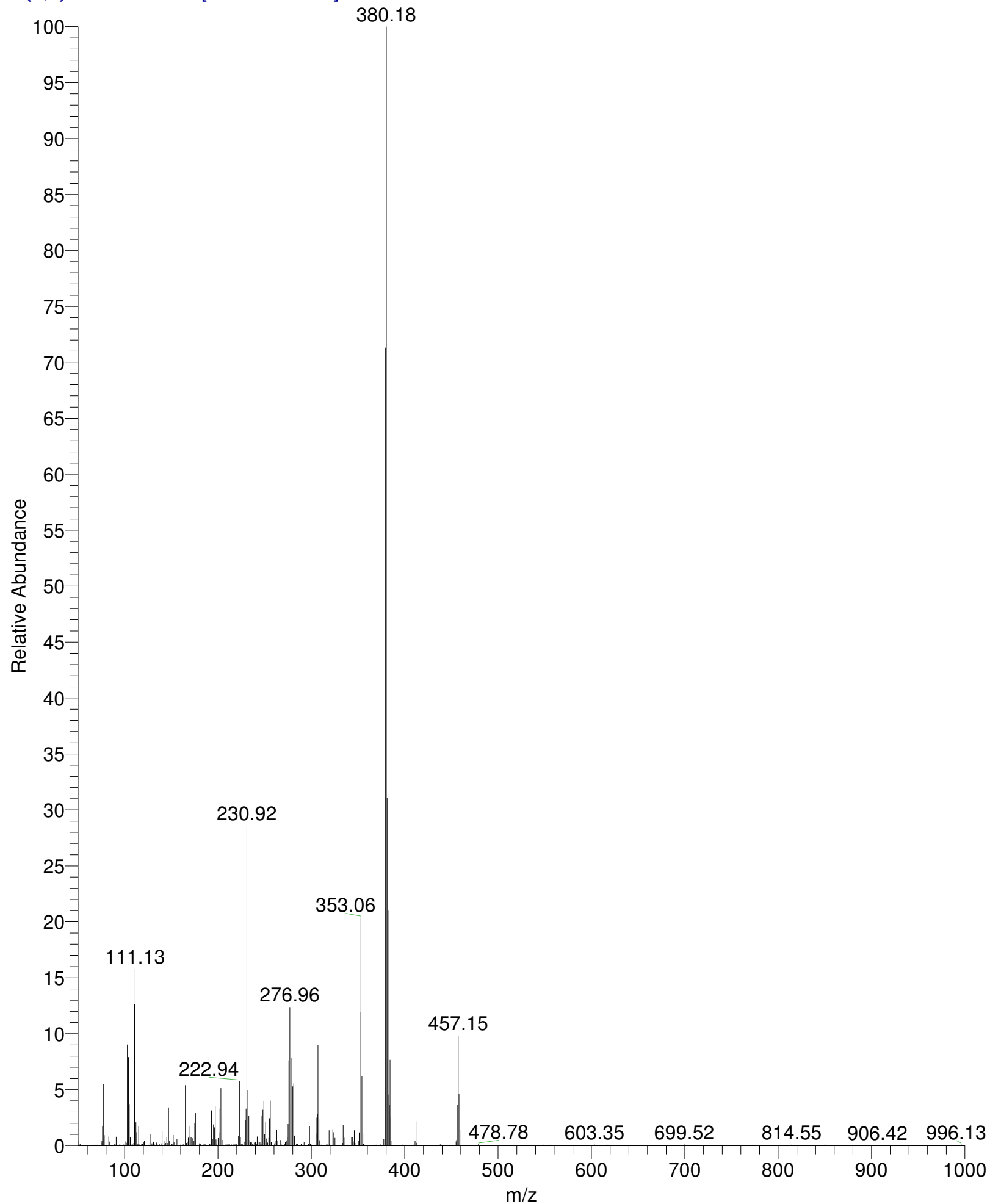
RT: 0.00 - 4.18

NL:
3.04E6
TIC MS
Selwan-40A



Selwan-40A #876 RT: 3.01 AV: 1 NL: 4.64E5

T: {0,0} + c EI Full ms [50.00-1000.00]



Selwan-40A#876 RT: 3.01

T: {0,0} + c EI Full ms [50.00-1000.00]

m/z= 50.00-1000.04

m/z	Intensity	Relative
50.04	277.6	0.06
50.97	1925.7	0.42
52.18	574.4	0.12
52.84	376.1	0.08
53.38	0.0	0.00
53.88	40.7	0.01
55.36	0.0	0.00
56.25	0.0	0.00
56.92	1.1	0.00
57.83	0.0	0.00
58.44	0.0	0.00
59.45	0.0	0.00
60.17	0.0	0.00
62.26	0.8	0.00
63.22	0.0	0.00
64.29	12.9	0.00
65.34	0.0	0.00
66.24	375.5	0.08
66.85	189.1	0.04
67.65	0.0	0.00
68.15	0.0	0.00
69.13	266.1	0.06
69.68	0.2	0.00
70.35	313.5	0.07
71.36	0.0	0.00
72.02	0.3	0.00
73.08	1.8	0.00
73.84	225.5	0.05
74.83	1098.2	0.24
75.65	1900.4	0.41
76.16	8094.3	1.75
77.00	25554.8	5.51
78.14	4228.3	0.91
78.99	131.3	0.03
80.81	318.9	0.07
81.33	0.0	0.00
82.97	3655.6	0.79
83.98	1600.8	0.35
84.60	0.0	0.00
85.14	0.2	0.00
85.68	0.3	0.00
86.39	0.0	0.00
87.57	0.0	0.00
89.21	552.9	0.12
89.95	451.2	0.10
90.96	3620.7	0.78
91.84	0.0	0.00
93.11	0.3	0.00
93.94	0.0	0.00
94.58	413.4	0.09
96.03	430.9	0.09
96.82	0.0	0.00
97.37	0.2	0.00
97.91	0.4	0.00
99.12	324.4	0.07

Selwan-40A#876 RT: 3.01

T: {0,0} + c EI Full ms [50.00-1000.00]

m/z= 50.00-1000.04

m/z	Intensity	Relative
100.06	0.3	0.00
101.23	1677.2	0.36
101.81	1065.8	0.23
102.90	41753.4	9.01
104.00	36578.3	7.89
105.01	17140.8	3.70
106.01	3360.0	0.72
107.10	380.9	0.08
108.15	29.8	0.01
108.75	330.9	0.07
109.65	971.4	0.21
110.60	58505.3	12.62
111.13	72997.0	15.75
111.98	9573.6	2.07
112.94	5420.5	1.17
114.04	640.4	0.14
114.98	7963.2	1.72
116.21	535.9	0.12
117.29	0.4	0.00
118.05	500.9	0.11
119.14	542.8	0.12
120.13	1311.1	0.28
121.06	1964.0	0.42
122.12	61.6	0.01
122.84	0.3	0.00
123.52	0.0	0.00
124.24	46.8	0.01
125.28	277.6	0.06
125.88	33.6	0.01
126.97	992.6	0.21
127.95	4548.7	0.98
128.61	48.7	0.01
129.27	810.4	0.17
130.19	1916.5	0.41
130.94	1331.7	0.29
131.90	378.8	0.08
132.61	47.5	0.01
133.23	41.4	0.01
134.00	1213.1	0.26
134.52	34.3	0.01
135.06	324.2	0.07
135.67	57.2	0.01
136.45	6.3	0.00
137.11	548.5	0.12
137.75	181.2	0.04
139.12	884.1	0.19
140.07	5798.7	1.25
141.45	79.5	0.02
142.07	1747.1	0.38
142.59	342.5	0.07
143.31	1.9	0.00
144.04	988.5	0.21
145.06	3471.7	0.75
146.13	1008.9	0.22
146.99	15700.9	3.39

Selwan-40A#876 RT: 3.01

T: {0,0} + c EI Full ms [50.00-1000.00]

m/z= 50.00-1000.04

m/z	Intensity	Relative
148.03	1780.4	0.38
148.74	17.6	0.00
149.80	529.5	0.11
151.02	473.7	0.10
152.01	4317.8	0.93
152.90	1289.7	0.28
153.55	41.5	0.01
154.09	76.2	0.02
155.12	49.7	0.01
156.00	2586.0	0.56
156.88	0.8	0.00
158.42	51.7	0.01
159.29	46.6	0.01
159.98	381.3	0.08
160.81	0.0	0.00
161.97	389.9	0.08
162.63	0.0	0.00
163.16	431.0	0.09
164.90	24955.3	5.38
166.17	983.7	0.21
166.99	1581.7	0.34
168.06	3157.9	0.68
169.01	7883.3	1.70
170.02	3738.8	0.81
170.96	3369.8	0.73
171.96	3377.8	0.73
172.94	2959.1	0.64
174.11	1999.1	0.43
175.02	9186.4	1.98
175.93	13351.6	2.88
177.38	760.5	0.16
178.36	46.7	0.01
179.05	248.8	0.05
180.10	876.1	0.19
181.13	801.4	0.17
181.90	319.8	0.07
182.41	38.9	0.01
183.47	0.1	0.00
184.10	679.2	0.15
184.97	513.7	0.11
186.03	573.9	0.12
186.84	0.7	0.00
187.45	0.0	0.00
188.35	0.5	0.00
189.07	16.1	0.00
189.81	26.8	0.01
190.90	566.6	0.12
191.90	405.5	0.09
193.03	14494.9	3.13
194.00	2595.2	0.56
195.01	8695.2	1.88
196.07	7515.2	1.62
196.98	16367.2	3.53
197.82	2437.9	0.53
198.61	586.2	0.13

Selwan-40A#876 RT: 3.01

T: {0,0} + c EI Full ms [50.00-1000.00]

m/z= 50.00-1000.04

m/z	Intensity	Relative
199.37	217.8	0.05
200.19	3032.6	0.65
201.01	5399.3	1.16
201.93	15262.6	3.29
202.97	23756.1	5.12
204.00	12162.7	2.62
205.03	2299.6	0.50
205.92	278.6	0.06
206.49	125.4	0.03
207.63	0.0	0.00
208.23	361.9	0.08
209.04	380.1	0.08
209.98	371.5	0.08
210.91	430.6	0.09
211.58	9.2	0.00
212.29	575.4	0.12
212.86	47.2	0.01
213.57	1.5	0.00
214.13	525.1	0.11
214.92	262.7	0.06
216.04	617.5	0.13
217.08	813.2	0.18
218.13	444.2	0.10
218.84	424.3	0.09
219.50	0.1	0.00
220.07	595.3	0.13
220.75	224.3	0.05
221.95	4023.6	0.87
222.94	26551.0	5.73
223.95	3506.5	0.76
224.72	775.2	0.17
225.23	50.0	0.01
226.07	653.5	0.14
227.03	306.0	0.07
228.57	1537.4	0.33
229.46	10483.1	2.26
230.04	15217.0	3.28
230.92	132569.2	28.60
231.96	22897.2	4.94
232.97	12324.9	2.66
234.07	2161.9	0.47
234.89	1275.0	0.28
235.97	1233.7	0.27
236.97	528.7	0.11
237.87	374.0	0.08
238.39	14.2	0.00
239.03	1158.4	0.25
239.98	1386.3	0.30
241.15	758.4	0.16
242.04	3666.7	0.79
242.84	1560.2	0.34
244.02	311.3	0.07
244.94	1316.4	0.28
245.53	326.1	0.07
246.22	773.0	0.17

Selwan-40A#876 RT: 3.01

T: {0,0} + c EI Full ms [50.00-1000.00]

m/z= 50.00-1000.04

m/z	Intensity	Relative
247.01	12399.1	2.67
248.01	14756.5	3.18
249.00	18497.2	3.99
250.00	4739.3	1.02
250.88	9756.9	2.10
251.95	2902.4	0.63
253.05	1196.2	0.26
254.32	3109.9	0.67
255.13	11251.9	2.43
256.06	18545.9	4.00
257.02	1296.7	0.28
257.74	1298.1	0.28
258.28	240.3	0.05
259.42	0.5	0.00
260.50	827.5	0.18
261.08	1924.0	0.42
262.14	2070.7	0.45
262.95	6627.5	1.43
263.97	2053.9	0.44
265.86	204.0	0.04
266.99	2209.0	0.48
267.99	327.4	0.07
268.65	0.2	0.00
269.18	307.7	0.07
269.68	0.0	0.00
270.53	0.0	0.00
271.24	592.4	0.13
272.16	1501.6	0.32
273.03	2043.3	0.44
274.09	3301.2	0.71
274.98	8851.8	1.91
275.94	35248.7	7.60
276.96	57288.1	12.36
277.99	16021.1	3.46
278.93	36334.1	7.84
279.99	24478.8	5.28
280.99	25662.5	5.54
282.01	4062.0	0.88
282.63	486.9	0.11
283.90	777.6	0.17
284.45	0.0	0.00
285.13	592.1	0.13
286.16	0.1	0.00
286.77	1.6	0.00
288.34	27.6	0.01
288.98	740.9	0.16
289.84	278.2	0.06
290.54	0.0	0.00
291.43	319.0	0.07
292.12	1512.0	0.33
293.09	214.6	0.05
294.74	22.4	0.00
295.35	0.3	0.00
295.94	16.0	0.00
297.03	733.0	0.16

Selwan-40A#876 RT: 3.01

T: {0,0} + c EI Full ms [50.00-1000.00]

m/z= 50.00-1000.04

m/z	Intensity	Relative
297.96	7919.9	1.71
298.86	597.6	0.13
299.69	358.7	0.08
300.24	317.9	0.07
301.00	9.2	0.00
301.93	21.3	0.00
302.78	257.6	0.06
303.89	301.0	0.06
304.90	4943.5	1.07
305.84	11521.2	2.49
306.53	13073.4	2.82
307.09	41477.1	8.95
308.05	10938.0	2.36
308.91	2162.7	0.47
310.03	261.2	0.06
311.28	462.8	0.10
312.17	0.2	0.00
313.43	10.2	0.00
314.06	0.0	0.00
315.31	0.0	0.00
316.24	426.6	0.09
317.08	370.8	0.08
317.74	1.6	0.00
318.96	6252.3	1.35
319.61	637.1	0.14
321.08	335.4	0.07
321.92	10.3	0.00
322.95	6658.6	1.44
324.01	5443.6	1.17
325.24	3154.2	0.68
326.18	226.2	0.05
327.05	33.4	0.01
328.37	0.0	0.00
329.24	0.0	0.00
329.85	0.0	0.00
330.61	0.0	0.00
331.26	0.0	0.00
331.80	300.0	0.06
332.69	204.9	0.04
333.40	978.7	0.21
334.06	8533.4	1.84
335.09	3156.5	0.68
336.34	0.2	0.00
336.96	0.0	0.00
337.52	0.0	0.00
338.07	0.0	0.00
338.80	312.2	0.07
339.37	0.1	0.00
340.27	181.6	0.04
341.56	0.0	0.00
343.04	3461.2	0.75
343.91	3523.6	0.76
344.98	1641.0	0.35
345.97	6284.6	1.36
346.84	1022.7	0.22

Selwan-40A#876 RT: 3.01

T: {0,0} + c EI Full ms [50.00-1000.00]

m/z= 50.00-1000.04

m/z	Intensity	Relative
347.93	33.6	0.01
348.50	0.2	0.00
349.06	40.0	0.01
349.88	248.1	0.05
350.64	1780.1	0.38
351.21	5364.2	1.16
352.03	55292.6	11.93
353.06	94439.5	20.37
354.14	28675.6	6.19
355.05	5017.5	1.08
355.86	730.1	0.16
356.54	0.0	0.00
357.27	265.1	0.06
357.99	0.0	0.00
358.99	0.0	0.00
360.34	0.0	0.00
360.87	0.0	0.00
361.74	0.0	0.00
362.68	0.0	0.00
363.70	0.0	0.00
364.85	0.0	0.00
365.48	224.2	0.05
366.29	0.2	0.00
367.03	34.5	0.01
367.63	276.8	0.06
368.38	41.6	0.01
369.39	253.5	0.05
370.03	247.5	0.05
370.74	0.0	0.00
371.78	0.3	0.00
372.70	0.0	0.00
373.32	0.0	0.00
373.85	0.0	0.00
374.48	434.7	0.09
375.03	0.0	0.00
376.17	162.4	0.04
376.76	40.2	0.01
377.45	2607.8	0.56
379.38	330555.8	71.31
380.18	463556.9	100.00
381.13	143975.2	31.06
382.08	97261.3	20.98
383.03	21085.1	4.55
383.53	16975.3	3.66
384.12	35466.3	7.65
385.11	11490.2	2.48
386.24	1884.2	0.41
387.62	0.2	0.00
388.50	0.0	0.00
389.30	0.2	0.00
390.17	0.0	0.00
390.70	1.2	0.00
391.38	0.0	0.00
392.38	0.0	0.00
393.32	0.0	0.00

Selwan-40A#876 RT: 3.01

T: {0,0} + c EI Full ms [50.00-1000.00]

m/z= 50.00-1000.04

m/z	Intensity	Relative
393.86	0.1	0.00
394.64	0.1	0.00
395.25	0.0	0.00
396.45	217.1	0.05
397.19	377.2	0.08
397.95	0.0	0.00
398.84	0.0	0.00
399.68	0.0	0.00
400.31	370.3	0.08
401.00	0.0	0.00
401.68	188.4	0.04
402.56	0.0	0.00
403.16	0.0	0.00
404.15	0.0	0.00
405.05	212.3	0.05
406.23	0.2	0.00
406.87	0.0	0.00
407.39	0.0	0.00
407.93	0.0	0.00
409.09	9.5	0.00
410.03	532.5	0.11
411.03	1797.8	0.39
411.99	9973.3	2.15
412.92	1108.7	0.24
413.43	185.5	0.04
414.42	29.2	0.01
415.37	0.0	0.00
417.09	0.0	0.00
417.86	0.0	0.00
418.68	0.4	0.00
419.54	0.0	0.00
420.31	0.0	0.00
421.24	0.0	0.00
422.22	0.0	0.00
423.34	0.0	0.00
424.07	12.3	0.00
425.30	0.0	0.00
426.67	0.0	0.00
427.36	21.0	0.00
427.98	0.0	0.00
428.86	34.1	0.01
429.76	0.0	0.00
430.45	0.0	0.00
431.56	0.0	0.00
432.26	0.0	0.00
432.98	0.0	0.00
433.65	0.0	0.00
434.91	0.0	0.00
435.47	0.0	0.00
436.20	10.3	0.00
437.38	12.3	0.00
437.93	480.4	0.10
438.77	812.5	0.18
439.70	0.0	0.00
440.46	1.8	0.00

Selwan-40A#876 RT: 3.01

T: {0,0} + c EI Full ms [50.00-1000.00]

m/z= 50.00-1000.04

m/z	Intensity	Relative
441.14	0.0	0.00
442.20	0.0	0.00
442.87	0.0	0.00
443.56	0.0	0.00
444.29	0.0	0.00
444.84	0.0	0.00
445.95	0.0	0.00
447.09	0.0	0.00
448.46	0.0	0.00
449.29	0.0	0.00
450.49	0.0	0.00
451.46	0.0	0.00
452.23	0.0	0.00
453.75	1.1	0.00
454.84	1623.4	0.35
455.48	2277.3	0.49
456.25	16730.6	3.61
457.15	45416.7	9.80
458.16	21246.1	4.58
459.10	6502.6	1.40
459.73	29.4	0.01
460.24	14.8	0.00
461.83	0.2	0.00
462.61	0.0	0.00
463.28	0.0	0.00
464.08	1.2	0.00
464.61	0.0	0.00
465.23	0.0	0.00
466.20	52.7	0.01
466.91	46.6	0.01
468.11	0.0	0.00
470.04	0.0	0.00
471.14	0.0	0.00
471.89	0.0	0.00
472.41	0.0	0.00
473.10	0.0	0.00
473.70	0.0	0.00
474.58	0.0	0.00
475.79	0.0	0.00
476.30	0.0	0.00
476.80	0.0	0.00
477.53	0.0	0.00
478.18	0.0	0.00
478.78	463.3	0.10
479.60	0.0	0.00
481.35	0.0	0.00
482.08	0.0	0.00
483.30	0.0	0.00
483.85	0.0	0.00
484.50	0.0	0.00
485.29	0.0	0.00
486.69	0.2	0.00
487.58	0.0	0.00
488.70	46.3	0.01
489.74	0.0	0.00

Selwan-40A#876 RT: 3.01

T: {0,0} + c EI Full ms [50.00-1000.00]

m/z= 50.00-1000.04

m/z	Intensity	Relative
490.83	0.0	0.00
491.79	0.0	0.00
493.29	0.2	0.00
494.91	0.0	0.00
495.68	0.0	0.00
496.32	0.0	0.00
498.53	0.0	0.00
499.93	0.1	0.00
501.15	0.0	0.00
501.66	0.0	0.00
502.54	0.0	0.00
503.56	0.0	0.00
504.98	0.0	0.00
505.52	0.0	0.00
506.07	0.0	0.00
506.63	0.0	0.00
507.23	0.0	0.00
507.82	0.0	0.00
508.59	0.0	0.00
509.35	0.0	0.00
509.89	0.0	0.00
510.96	0.0	0.00
512.28	0.0	0.00
512.83	0.0	0.00
513.36	0.0	0.00
513.96	0.0	0.00
514.86	0.0	0.00
515.88	0.0	0.00
517.28	0.0	0.00
518.54	0.0	0.00
519.92	0.0	0.00
520.48	0.0	0.00
521.81	0.0	0.00
523.28	0.0	0.00
524.67	0.0	0.00
525.24	0.0	0.00
526.20	0.0	0.00
527.20	0.0	0.00
528.26	0.0	0.00
530.40	0.0	0.00
531.03	0.2	0.00
532.10	0.0	0.00
532.62	0.0	0.00
533.19	0.0	0.00
533.97	0.0	0.00
534.77	0.0	0.00
535.81	0.0	0.00
536.78	0.0	0.00
537.89	0.0	0.00
538.77	0.0	0.00
539.35	0.0	0.00
541.00	0.0	0.00
542.46	0.0	0.00
542.99	0.0	0.00
544.24	0.0	0.00

Selwan-40A#876 RT: 3.01

T: {0,0} + c EI Full ms [50.00-1000.00]

m/z= 50.00-1000.04

m/z	Intensity	Relative
545.75	0.0	0.00
546.50	0.0	0.00
547.31	0.0	0.00
547.95	0.0	0.00
548.65	319.7	0.07
549.43	0.0	0.00
550.36	0.0	0.00
550.95	0.0	0.00
551.68	0.0	0.00
553.50	0.0	0.00
554.24	0.0	0.00
556.03	247.6	0.05
557.03	0.0	0.00
557.62	0.0	0.00
558.43	0.0	0.00
559.33	0.0	0.00
559.91	0.0	0.00
560.46	0.0	0.00
561.99	0.0	0.00
563.46	0.0	0.00
564.20	0.0	0.00
564.86	0.0	0.00
565.94	0.3	0.00
566.70	0.0	0.00
568.68	0.0	0.00
569.78	0.0	0.00
570.55	0.0	0.00
571.58	0.0	0.00
572.79	0.0	0.00
574.04	0.0	0.00
574.77	0.0	0.00
575.94	0.0	0.00
577.44	0.0	0.00
577.95	0.0	0.00
579.26	0.0	0.00
579.95	0.0	0.00
580.57	0.0	0.00
581.57	0.0	0.00
582.16	0.0	0.00
583.18	0.0	0.00
584.41	0.0	0.00
585.11	0.0	0.00
585.90	0.0	0.00
586.79	0.0	0.00
587.87	0.0	0.00
590.15	0.0	0.00
591.07	0.0	0.00
592.95	0.0	0.00
594.60	0.0	0.00
595.66	0.0	0.00
596.62	0.1	0.00
598.10	0.0	0.00
599.13	0.0	0.00
599.97	0.0	0.00
600.54	27.0	0.01

Selwan-40A#876 RT: 3.01

T: {0,0} + c EI Full ms [50.00-1000.00]

m/z= 50.00-1000.04

m/z	Intensity	Relative
601.94	0.0	0.00
603.35	327.3	0.07
603.86	0.0	0.00
605.52	0.0	0.00
606.17	0.0	0.00
606.80	0.0	0.00
608.04	184.2	0.04
609.69	0.0	0.00
610.54	0.0	0.00
611.22	0.0	0.00
611.75	0.1	0.00
612.80	159.4	0.03
614.86	0.0	0.00
615.41	0.0	0.00
616.09	0.0	0.00
616.68	0.0	0.00
617.54	310.1	0.07
618.86	0.0	0.00
619.55	0.0	0.00
620.11	0.0	0.00
621.11	0.3	0.00
622.46	0.0	0.00
623.53	0.0	0.00
624.74	0.0	0.00
625.63	0.0	0.00
626.89	0.0	0.00
627.97	0.0	0.00
630.06	0.0	0.00
631.47	0.0	0.00
632.81	0.0	0.00
633.66	0.0	0.00
634.48	0.2	0.00
635.02	0.0	0.00
635.91	0.0	0.00
636.45	0.0	0.00
637.21	0.0	0.00
638.04	0.0	0.00
638.94	0.0	0.00
640.04	0.0	0.00
641.90	0.0	0.00
642.58	0.1	0.00
643.14	0.0	0.00
643.73	0.0	0.00
644.38	0.0	0.00
645.00	0.0	0.00
645.65	0.0	0.00
646.87	0.0	0.00
647.82	0.0	0.00
648.76	0.0	0.00
650.22	0.0	0.00
652.41	0.0	0.00
653.17	0.0	0.00
654.09	0.2	0.00
655.23	0.0	0.00
656.04	0.0	0.00

Selwan-40A#876 RT: 3.01

T: {0,0} + c EI Full ms [50.00-1000.00]

m/z= 50.00-1000.04

m/z	Intensity	Relative
657.76	0.0	0.00
659.51	0.0	0.00
660.44	0.0	0.00
661.30	0.0	0.00
662.83	0.0	0.00
663.64	0.0	0.00
664.53	0.0	0.00
665.48	0.0	0.00
666.62	0.0	0.00
669.33	0.0	0.00
669.99	0.0	0.00
670.64	0.0	0.00
671.54	0.0	0.00
673.27	0.0	0.00
673.81	0.0	0.00
674.42	0.0	0.00
676.42	0.0	0.00
677.26	0.0	0.00
678.22	0.0	0.00
678.75	0.0	0.00
679.36	0.0	0.00
679.90	0.0	0.00
680.44	0.0	0.00
680.99	0.0	0.00
682.15	0.0	0.00
682.90	0.0	0.00
684.24	0.0	0.00
685.11	0.0	0.00
687.12	0.0	0.00
687.95	0.0	0.00
688.75	0.0	0.00
689.46	0.0	0.00
690.18	0.0	0.00
691.27	1.5	0.00
691.98	0.0	0.00
692.56	0.0	0.00
693.19	0.0	0.00
693.85	0.0	0.00
694.85	0.0	0.00
696.07	0.0	0.00
696.95	0.0	0.00
698.28	0.0	0.00
698.93	0.0	0.00
699.52	324.8	0.07
700.17	0.0	0.00
700.70	0.0	0.00
701.47	0.0	0.00
702.03	0.0	0.00
702.85	0.0	0.00
703.58	0.0	0.00
704.33	0.0	0.00
705.12	0.0	0.00
705.64	0.0	0.00
706.22	0.0	0.00
707.09	0.0	0.00

Selwan-40A#876 RT: 3.01

T: {0,0} + c EI Full ms [50.00-1000.00]

m/z= 50.00-1000.04

m/z	Intensity	Relative
707.73	0.0	0.00
709.26	0.0	0.00
710.01	0.0	0.00
710.57	0.0	0.00
711.41	0.0	0.00
712.14	0.0	0.00
712.70	0.1	0.00
713.63	0.0	0.00
715.06	0.0	0.00
715.63	0.0	0.00
716.57	0.0	0.00
718.10	0.0	0.00
718.97	0.0	0.00
719.47	0.0	0.00
720.09	0.0	0.00
721.05	0.0	0.00
721.96	0.0	0.00
722.70	0.0	0.00
724.12	0.0	0.00
725.38	0.0	0.00
726.19	0.0	0.00
727.27	0.0	0.00
727.98	0.0	0.00
728.66	0.1	0.00
730.20	0.0	0.00
731.06	0.0	0.00
731.78	0.0	0.00
732.58	0.0	0.00
733.46	0.0	0.00
734.75	0.0	0.00
736.34	0.0	0.00
737.56	0.0	0.00
739.02	0.0	0.00
740.42	0.0	0.00
741.17	0.0	0.00
742.11	0.0	0.00
743.17	0.0	0.00
745.38	0.0	0.00
746.44	0.0	0.00
747.49	0.0	0.00
748.73	0.0	0.00
749.58	0.0	0.00
750.26	0.0	0.00
752.36	0.0	0.00
753.92	187.4	0.04
755.41	0.0	0.00
756.39	0.0	0.00
757.20	0.0	0.00
757.98	0.0	0.00
758.65	0.0	0.00
759.27	0.0	0.00
759.77	0.4	0.00
760.98	0.0	0.00
762.55	0.0	0.00
764.51	0.0	0.00

Selwan-40A#876 RT: 3.01

T: {0,0} + c EI Full ms [50.00-1000.00]

m/z= 50.00-1000.04

m/z	Intensity	Relative
765.42	0.0	0.00
767.59	0.0	0.00
768.77	0.0	0.00
770.14	0.0	0.00
771.51	0.0	0.00
773.18	0.0	0.00
774.44	0.0	0.00
776.19	0.0	0.00
777.80	0.0	0.00
778.68	0.0	0.00
779.37	0.0	0.00
780.12	0.0	0.00
781.20	0.0	0.00
782.53	0.0	0.00
783.44	0.0	0.00
784.10	0.0	0.00
786.26	0.0	0.00
788.59	0.0	0.00
789.61	0.0	0.00
790.23	0.0	0.00
790.87	0.0	0.00
791.99	0.0	0.00
793.52	0.0	0.00
795.46	0.0	0.00
796.15	175.0	0.04
797.23	0.0	0.00
798.36	0.2	0.00
799.49	0.0	0.00
801.07	49.7	0.01
802.46	0.0	0.00
803.37	0.0	0.00
804.26	0.0	0.00
805.64	0.0	0.00
806.50	0.0	0.00
807.03	0.0	0.00
809.01	0.0	0.00
809.67	0.0	0.00
810.27	0.0	0.00
812.52	0.0	0.00
813.33	5.6	0.00
813.87	0.0	0.00
814.55	377.6	0.08
815.41	0.0	0.00
816.42	0.0	0.00
817.08	0.0	0.00
817.90	0.0	0.00
819.27	0.0	0.00
819.79	0.0	0.00
820.35	0.0	0.00
821.90	0.0	0.00
823.24	0.0	0.00
824.35	0.0	0.00
825.09	0.0	0.00
825.96	0.1	0.00
826.66	0.0	0.00

Selwan-40A#876 RT: 3.01

T: {0,0} + c EI Full ms [50.00-1000.00]

m/z= 50.00-1000.04

m/z	Intensity	Relative
828.07	0.0	0.00
829.91	0.0	0.00
830.69	0.0	0.00
831.81	0.0	0.00
832.85	0.0	0.00
834.55	0.1	0.00
835.27	0.0	0.00
835.93	0.0	0.00
836.73	0.0	0.00
838.01	12.8	0.00
838.62	0.0	0.00
839.89	0.0	0.00
841.91	0.0	0.00
843.16	0.0	0.00
844.00	0.0	0.00
845.73	0.0	0.00
846.82	0.0	0.00
847.84	0.0	0.00
848.95	0.0	0.00
849.48	275.5	0.06
850.13	0.4	0.00
851.35	366.7	0.08
852.79	0.0	0.00
854.00	0.0	0.00
854.67	0.0	0.00
855.19	0.0	0.00
856.03	47.0	0.01
856.91	0.0	0.00
858.09	0.0	0.00
859.25	0.0	0.00
860.10	0.0	0.00
860.69	0.0	0.00
861.31	0.0	0.00
862.20	0.0	0.00
863.37	0.0	0.00
864.89	0.0	0.00
866.31	0.0	0.00
867.03	0.0	0.00
868.91	0.0	0.00
869.68	0.0	0.00
870.66	0.0	0.00
871.53	0.0	0.00
872.53	0.0	0.00
874.29	0.0	0.00
876.23	0.0	0.00
877.21	0.0	0.00
883.08	0.0	0.00
884.48	0.0	0.00
885.35	0.0	0.00
886.61	0.0	0.00
888.85	0.0	0.00
889.49	0.0	0.00
891.52	0.0	0.00
892.34	0.0	0.00
893.99	0.2	0.00

Selwan-40A#876 RT: 3.01

T: {0,0} + c EI Full ms [50.00-1000.00]

m/z= 50.00-1000.04

m/z	Intensity	Relative
894.59	0.0	0.00
896.50	0.0	0.00
897.21	0.0	0.00
898.88	0.0	0.00
900.21	0.0	0.00
900.74	0.0	0.00
903.85	0.0	0.00
904.50	0.0	0.00
905.12	0.0	0.00
906.42	0.4	0.00
907.13	0.0	0.00
908.06	0.0	0.00
908.84	0.0	0.00
909.90	0.0	0.00
911.04	0.0	0.00
912.77	0.0	0.00
913.45	0.0	0.00
914.03	0.0	0.00
914.77	0.0	0.00
915.79	0.0	0.00
917.06	0.0	0.00
917.87	0.0	0.00
918.46	0.0	0.00
919.60	0.0	0.00
921.77	0.0	0.00
922.82	0.1	0.00
923.69	0.0	0.00
924.48	0.0	0.00
925.77	0.0	0.00
927.30	0.0	0.00
928.09	0.0	0.00
929.20	0.0	0.00
930.91	0.0	0.00
931.64	0.0	0.00
932.57	0.0	0.00
933.68	0.0	0.00
935.72	0.0	0.00
936.50	0.0	0.00
937.06	0.0	0.00
937.63	0.0	0.00
938.79	0.0	0.00
939.95	0.0	0.00
940.47	0.0	0.00
943.81	0.0	0.00
944.94	0.0	0.00
945.57	0.3	0.00
946.30	0.0	0.00
947.01	0.0	0.00
948.02	0.0	0.00
948.96	0.0	0.00
950.71	0.0	0.00
952.46	0.0	0.00
953.68	0.0	0.00
955.58	0.0	0.00
956.18	0.0	0.00

Selwan-40A#876 RT: 3.01

T: {0,0} + c EI Full ms [50.00-1000.00]

m/z= 50.00-1000.04

m/z	Intensity	Relative
957.84	0.0	0.00
958.47	0.0	0.00
959.21	257.2	0.06
960.59	0.0	0.00
961.53	0.0	0.00
962.37	0.0	0.00
963.33	0.0	0.00
964.34	0.0	0.00
966.35	0.0	0.00
967.77	0.0	0.00
969.22	0.0	0.00
970.44	0.0	0.00
971.82	0.0	0.00
972.39	0.0	0.00
973.44	0.0	0.00
974.11	0.0	0.00
975.11	0.0	0.00
975.66	0.0	0.00
976.26	0.0	0.00
977.20	0.0	0.00
977.86	0.0	0.00
978.90	0.0	0.00
979.80	0.0	0.00
981.18	0.3	0.00
981.79	0.0	0.00
983.06	0.0	0.00
984.59	0.0	0.00
985.21	0.0	0.00
986.54	0.0	0.00
987.49	0.0	0.00
988.23	0.1	0.00
989.59	0.0	0.00
990.76	0.0	0.00
991.76	0.0	0.00
992.37	0.0	0.00
992.97	0.0	0.00
993.81	0.0	0.00
995.18	0.0	0.00
996.13	374.8	0.08
996.84	0.0	0.00
998.54	0.0	0.00
999.26	0.0	0.00